

**February 2024**  
**EAA CHAPTER 377**



# fly paper

EAA—Our mission: To grow participation in aviation by sharing the spirit of aviation.

## LAST MONTH

FROM RANDAL LODER

## THIS MONTH

**Saturday, February 10**

**Noon potluck at**

**Lyddon Aero Center**

**KLBL—Liberal, KS**

**NOTAM—RUNWAY 17/35 CLOSED (Exp 2/12)**

CTAF/UNICOM—122.8

WX AWOS-3PT—118.375 (620-624-1221)

Runway 17/35—7105 x 100 ft.

Runway 4/22—5000 x 75 ft.

Lyddon Aero Center UNICOM 122.80

620-624-1646

toll-free 1-800-659-1646

Bring a side dish to share.

On Saturday, December 9, 2023, EAA Chapter #377 met at the Spencer Flight & Education Center at the Scott City, KS Airport (KTQK) for the annual Christmas Party Fly-In. The high winds in the area prevented several from flying in, but 10 members and 12 guests still made their way.

While getting the abundant supply of gifts and people numbered for the Naughty Santa Exchange there were snacks, dips, and lots of good conversation. President Bill Cotter opened with a blessing of the meal of cheesy brocolli potato soup, chilli, and fixings provided by hosts Susan Turpin and Randal Loder. Members and guests brought in a wide selection of desserts.

President Cotter opened the business meeting and the minutes of the December 10, 2022 meeting were approved. Members approved the Treasurer's report of the prior year's business followed by a re-election of the current Officers, Bill Cotter, President, Bill Anton, Vice President, Randal Loder, Secretary and Treasurer, and Mary Shortridge, FLY PAPER editor.

The gift exchange featured 17 gifts and was rather unusual in that only 1 person chose to "steal" another person's already opened gift rather than choose one the remaining upopened. Definitely a kinder, gentler, more easily satisfied group than some recent years, but still fun for everyone.

## NEXT MONTH

**RACHELLE POWELL**, Director of Garden City Regional Airport, has reserved space for our EAA Chapter in the new space for our March 9 meeting. The Airport Restaurant should be up and running by then. **MEL CRIST** will be our local contact. Stay tuned for more details. The restaurant is NOT located in a secured area of the airport.

Phase II of the GCK Terminal Project includes the



"arrival" passenger experience. Phase II includes Gate 2 with enclosed passenger boarding bridge, baggage carousel, secured restrooms, secured Service Animal Relief Area, meet/greeter space, rental car counters and offices, and back of the house space for tenants and employees. The project is anticipated to be completed in late spring 2024. Photos page 10.

# F.Y.I.

Chapter 377 normally meets on the second Saturday of each month. "Meetings" are normally fly-ins to different member airports, with a potluck at noon and short meeting following. December is the Club Christmas Party. Contact any of the officers listed to confirm meeting date and place. Anyone interested in recreational flying or building is encouraged to attend.

FLY PAPER is published monthly (except November/December), normally e-mailed a week before each meeting/fly-in.

Annual membership in Chapter 377 includes one year subscription to FLY PAPER. Send \$20 to Randal Loder, Treasurer,

Readers are encouraged to contribute articles, photos, etc. by submitting them to the Editor/Publisher.

**Deadline for the March 2024 issue is Friday, March 1, 2024**

## OFFICERS:

**President**—Bill Cotter, 936-499-8042, wmpcotter@aol.com

**Vice President**—Bill Anton, 620-649-2797 or (c)649-7172, bnanton@pld.com

**Newsletter Editor / Publisher**—Mary Shortridge  
620-272-4379 (receives text messages, photos)  
maryshortridge@gmail.com  
12401 Yankee Hill Rd, Bennet, NE 68317

**Tech Counselor**—Bill Anton, 620-649-2797 or (c)649-7172, bnanton@pld.com

**Treasurer/Secretary**—Randal Loder, rloder@ssbscott.com  
Work Phone: 620-872-7224  
Ext. 231, Mobile: 620-214-3877  
508 S College St, Scott City, KS 67871



## COMING UP in 2024...

**10 February**—EAA 377 Monthly Fly-In Noon Potluck hosted by Lyddon Aero Center, Liberal, KS.

**9 March**—EAA 377 Monthly Fly-In. Our group will gather at the brand new restaurant in the new Garden City Terminal KGCK. More details soon.

**Monday, April 8, 2024**—Solar Eclipse activities at various airports along the Eclipse path.

**13 April**—EAA 377 Monthly Fly-In Noon Potluck with Pot roast BBQ. Hosted by Bill Cotter and Dennis Tevebaugh.

?? April—2nd Annual Alan Ochs Memorial Fly-in at Crotts Aircraft, Dodge City, KS

**11 May**—EAA 377 Monthly Fly-In Noon Potluck hosted by Centerline Aviation/Greg Downing. Guymon, OK.

**8 June**—EAA 377 8:30am Breakfast Fly-In, Logan Aviation, Lakin, KS.

**13 July**—EAA 377 Monthly Fly-In Noon Potluck hosted by Marshall Watson Family, Sublette, KS.

20 July—Nebraska State Fly-In at O'Neill Airport KONL

**10 August**—EAA 377 Monthly Fly-In **BREAKFAST** hosted by City of Hooker and friends, Hooker, OK..

**14 September**—EAA 377 Monthly Fly-In Potluck hosted by Mid America Air Museum/Bob Immel. Liberal, KS.

**5 October**—EAA 377 gathering at the Classic Fly-In at Syracuse,

**KS. PLEASE NOTE FIRST SATURDAY!**

**9 November**—EAA 377 Monthly Fly-In Noon Potluck. **No host yet.**

**14 December**—EAA 377 Monthly Fly-In Potluck hosted by Randal Loder and Susan Turpin at Spencer Flight and Education Center, Scott City, KS Airport.

## ANOTHER ISSUE

**THANKS TO:** Bill Cotter, Bill Long, EAA, James Kirk, Jennifer Lyddon, Mel Crist, Rachelle Powell, Randal Loder, Rick Dearden, Todd Crist, Tom Auerbach. **THANK YOU ALL FOR YOUR SUPPORT!**

Ponca City Aviation Booster Club  
FaceBook Group

<https://www.facebook.com/groups/1125751554951764>

Photos from previous Breakfasts are posted under "Media / Albums". Also: Effective April 1, 2023 hours extended 7:00AM to 10:30AM and requested donation \$10 adults / \$5 kids under 12. Flyer page 16

You don't have to be an instrument pilot to benefit from the IMC Club meetings at SFEC. Meeting is 7-8pm CT, with dinner offered at 6:45. Come join in on the discussion on the second Monday of each month (not meeting in June). For More Information you can contact

**Elizabeth Vulgamore,**  
Volunteer administrator  
620-874-8325

**Spencer Flight & Education Center (Located on the Scott City, KS Airport)**  
300 S. Mesquite Rd  
Scott City, KS 67871  
Phone: 620-872-3000

Email:  
[info@spencerflightcenter.com](mailto:info@spencerflightcenter.com)



## **KAREN S. CRIST**

Karen S. Crist, age 70, passed away on Tuesday, January 23, 2024, at Bridge Haven Facility in Lawrence, Kansas. She was born on April 26, 1953, in Scott City, Kansas, the daughter of Joseph and Serena Rodenberg Schoonover. A resident of Scott City, Kansas from 1953 until 1972 moving to Manhattan Kansas where she was a cosmetologist. In 1976 Karen & Skip moved to the farm near Friend, Kansas where she was a homemaker. In 2004 they moved to Garden City, Kansas.

Karen was a member of the Prairie View Church of the Brethren in Friend, Kansas. She also was very involved with other church activities including being a Sunday school teacher, Bible school teacher, church board member, and was active with the Prairie View Church Women's Fellowship. She was also a member of PEO, Salmagundi, and Circle of Friends.

On June 8, 1974, she married Skip Crist in Scott City, Kansas. He survives.

Survivors include her Husband - Skip Crist of Garden City, Kansas, Two Daughters - Kelsie & Derrick Crist-Funk of Manhattan, Kansas, Angie & Scott Ackerman of Garden City, Kansas, One Son - Ryan & Kirby Crist of Shawnee, Kansas, One Sister - Jan Morrow of Dodge City, Kansas, and Nine Grandchildren.

She was preceded in death by her Parents, Two Sisters - One Infant Sister, and Judy Ricke.

Memorial service was held at 2:00 p.m. Wednesday, January 31, 2024, at the Prairie View Church of the Brethren in Friend, Kansas with Pastor Jon Tuttle.

Memorials can be written to Scott City Animal Rescue or Prairie View Church of the Brethren in care of Price & Sons Funeral Home, PO Box 553, Scott City, Kansas, 67871.



# HEARD IN THE HANGAR



**FROM JIM KIRK**—Tuesday, January 30, **RESTORED AIRCRAFT** delivered the **1946 FUNK** (Coffeerville, KS. made airplane) to **KS HISTORY MUSEUM**.

**JOHN ROPER**, owner, had rotator-cuff surgery Dec 29 so, with right arm restraint (in sling) he w/Quincy & myself unloaded FUNK ... got it into Museum & assembled tail, then put wings on it, wheel covers, etc. The '46 FUNK airplane will hang overhead at Entrance of Museum. (after they get new sprinkler system installed). The museum is temporarily closed; will reopen Fall 2024 estimated.

The other plane in Museum is a **1923 LONGLREN** (only surviving example of 28 Longlren A/C built in Topeka in '20's



When I read KYMBERLY LOGAN'S article submitted for January's FLY PAPER, I knew Chapter headquarters needed to know about it. I am so glad I was able to connect, as so much communication is automated these days. Emme answered my request, and was impressed as well. Our Chapter is lucky to have the enthusiasm of the younger generation to keep us going.

<https://inspire.eaa.org/2024/01/25/a-challenge-for-chapters/>

## **PILOT'S TIP OF THE WEEK**

### **Preflight After Annual**

#### **Featuring Dean Showalter**

“During an annual inspection, all kinds of things get taken apart, and it’s more common than we’d like that something will not be put back together perfectly. There might be loose screws, something might be improperly assembled, or there might be a panel hanging loose under the airplane.

A friend told me about a disturbing noise in flight on a Cessna 172 on the first flight after an inspection. After landing, he discovered the round panel for accessing the elevator trim actuator was hanging loose and was flopping in the airstream. One time, I had finished an annual inspection and I thought I had things closed up. I asked another A&P to look things over and he was satisfied as well. Later, I decided to do one last final check—and that’s when I noticed some loose and missing screws under the airplane.

For a check like this, a creeper is your best friend. Here’s what I’d recommend: Grab a Phillips screwdriver and a creeper; roll around under the airplane, front to back, left to right looking for loose or missing screws. One way to detect loose screws is to lightly move your fingers across the panel screws. A loose screw will often make just enough sound when you bump it to detect it’s not tight.

Don’t just walk around the airplane when you preflight after an annual inspection. Be sure to take a close look under the airplane as well.”

### **A Check-up on Checklist Customization**

**Notice Number: NOTC3401**

Using a checklist is a fundamental part of any safe flight. During preflight, a checklist ensures pilots inspect an aircraft’s components and systems for proper operation and structural integrity and allows them to verify airworthiness. On taxi and during flight, they help ensure the airplane and engine are functioning properly and are configured appropriately for each phase of flight. Checklists provide important structure to the things we check often, usually in a prescribed order of priority. Bottom line: checklist usage is a sound and proven way to reduce errors and improve flight safety.

But just like airplanes change with upgrades or modifications, so too should checklists to include those new items and procedures or omit those that are obsolete. Maybe you’ve added some new avionics equipment or installed a new fire extinguisher. Or perhaps you’d like to reorder your instrument and gauge checks in a more logical manner. Or maybe you’d prefer to use

a more specific term to verify a desired state than the sometimes vague “check and set” response. The question for some might be - how exactly do I modify a checklist?

While there is no approval required from the FAA to modify or customize a checklist, pilots and aircraft owners should start by consulting their aircraft’s Pilot Operating Handbook (POH) or Airplane Flight Manual (AFM), or panel placards with some older aircraft. These steps should constitute the baseline for your checklist. If there is a manufacturer-prescribed task or procedure you wish to omit -- perhaps due to concerns about mechanical wear and tear on a particular component – you should consult directly with the manufacturer to ensure safety is not compromised.

The FAA issued a Safety Alert for Operators (SAFO 17006) in 2017 that addresses safety concerns with using commercial off-the-shelf (COTS) or personally developed checklists. The notice was prompted by an accident involving a landing gear failure in which the pilot used a COTS checklist that lacked key steps regarding manual gear extension. The SAFO urges pilots to ensure any COTS or personal checklist is consistent with what the manufacturer states.

Another important reason for this consistency is apparent during practical exams for a pilot certificate or rating. Designated pilot examiners may require an aircraft manufacturer’s procedure is demonstrated when testing applicants. Those who use a checklist that differs from the manufacturer may omit or incorrectly perform an important step, impacting their ability to successfully pass the exam. If you are providing flight instruction it is essential that you show, demonstrate, and explain any omitted items to students to avoid this potential pitfall. The student should be able to demonstrate the procedure and be able to explain why it has been omitted from the modified checklist and is not performed routinely.

Having checklists that are efficient, logical, and that account for changes to an aircraft’s systems can greatly improve safety and even increase the likelihood of them being used. Just be sure the information you use for those revised checks is correct, complete, and consistent with the manufacturer’s safety standards.

**Bonus Tip:** Want to take your preflight checklist to the next level? Check out the FAA Safety Team’s Advanced Preflight M-Pamphlet here. This pamphlet helps pilots obtain valuable maintenance history on their aircraft like ADs, ACs, and any manufacturer service-related information, and then develop an Additional Items Checklist that can be used in conjunction with your aircraft’s preflight checklist.

**FROM MARY SHORTRIDGE**—When it is too nasty to fly I love working in my shop. My latest project: a 36" wall clock of an A37B Tweety Bird for **CHRIS STOKES**. He caught me hanging it; it was supposed to be a surprise. Chris flies a 777 for United, and owns a Stearman, Bonanza, and is putting together the Tweety Bird at the Lincoln NE Airport.





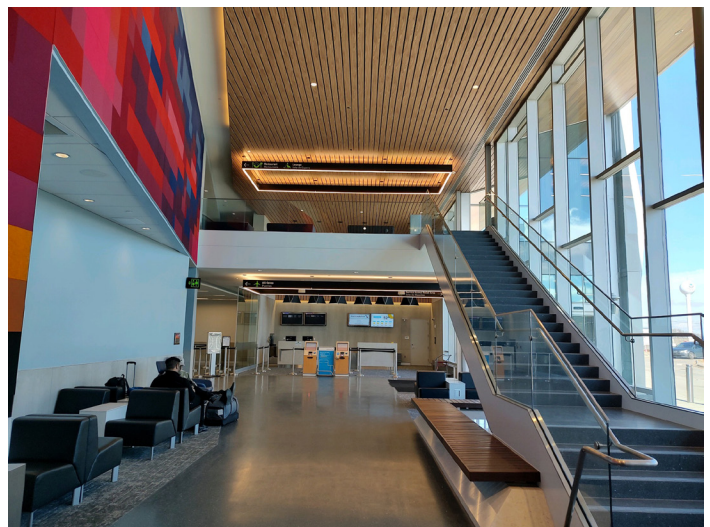
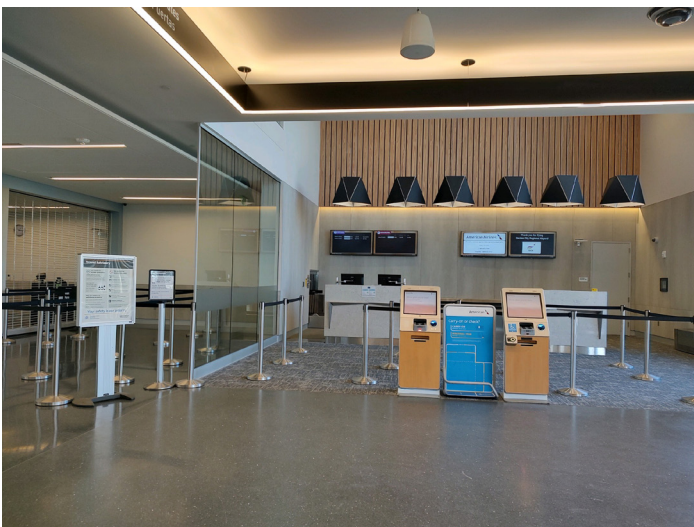
# Beechcraft

**TODD AND AMBER CRIST** with their Bonanza, and a family history of Bonanzas (2 previous generations)

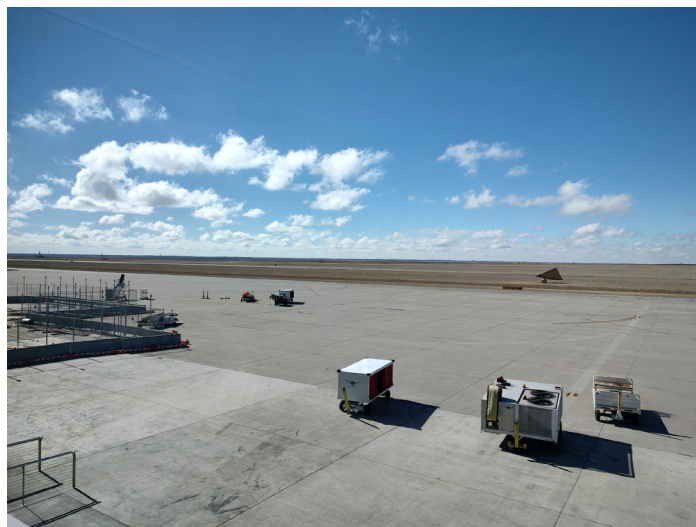


**TODD AND AMBER CRIST** of Derby, KS with **JANE AND MEL CRIST** of Garden City. Todd and Amber landed on Skip Crist's airport for Karen Crist's funeral.

# DEARDEN'S TAKE A PEEK AT THE NEW GARDEN CITY AIRPORT





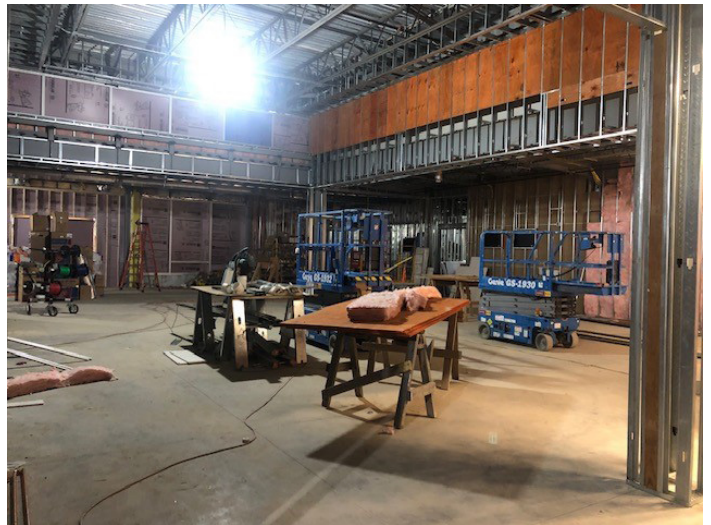


Photos by Rick Dearden.

# KGCK PHASE 2



Arrivals



Baggage Claim



Gate Area



Phase 2 Arrivals



Restrooms



Tenant Space

# Haskell County Historical Society Annual Meeting

Saturday, February 10, 2024

Historical Museum, 605 E. Watkins Ave. Sublette

For questions, call: 620-675-8344 W-F, 1-5 pm or 675-5026



## Vintage Aircraft

*Pat Duggins, Historical Airplane Appraiser and expert on the Stearman aircraft will present the program*



*5-6 pm Social Hour*

*6 pm Meal catered by John Ross Catering*

*Program following the meal*

*Tickets available from Board Members:*

*Jim Groth, Jill Hill, Erika Alexander, Ken Weidner, Cheri Miller, Karen Messerly, Terry Presley, Henry Miller, Kit Griffin, Marcus Rogge, & Laura Reineke, curator*

# UPCOMING EVENTS

**TOM AUERBACH** of Ponca City, OK does a GREAT job of keeping a list compiled of upcoming aviation events. Looking for an excuse to fly? Here you go! Remember to verify as part of your preflight! Covid issues as well as weather issues can cause last minute changes.

If you know an event has been cancelled, please contact Tom Auerbach @m20c78956@sbcglobal.net

## LONG RANGE PLANNING:

Note: If you know that any of these events has been cancelled, please send me an email, Tom Auerbach.  
Warning: As always check with the contact information before flying.

### Saturday, February 3, 2024

Ponca City Aviation Booster Club Fly-In/Drive-In Breakfast – 7:00-10:30AM

Ponca City OK Regional Airport (KPNC)

Sponsored by the Ponca City Aviation Foundation on the first Saturday of every month rain or shine. Contact Bruce Eberle 580-761-5884 email: ou444@yahoo.com Breakfast is served from 7:00 to 10:30 a.m. The requested donation is \$10 adults, \$5 children under 12. The menu includes pancakes, scrambled eggs, bacon, sausage, potatoes, biscuits & gravy, orange juice, coffee, and fruit. Cold soda pop and bottled water are available at \$1.00 each.

See also FaceBook Group – Ponca City Aviation Booster Club - <https://www.facebook.com/groups/1125751554951764>

See Flyer.

### Saturday, February 3, 2024

Haskell OK: Coffee & Donuts

Haskell Airport (2K9) AirNav.com CTAF: 122.9

EVERY SATURDAY - 8:00 am - 10:00 am - Rain or shine, fly or drive, aviation enthusiasts will be there no matter what the weather is doing.

See flyer.

### Saturday, February 3, 2024

Pauls Valley Hamburger Lunch Fly-In

Pauls Valley Municipal Airport (KPVJ)

AirNav.com CTAF: 122.8

Oklahoma Antique Airplane Association

LET'S KEEP EM FLYING!! - Johnene Smith

The Oklahoma Antique Airplane Association has a monthly meeting/Fly-In at or club house on the north-west corner of the PVJ field, once a month on the first Saturday. Come join in on the fun! You don't have to

fly an antique in, we have cars, motorcycles, and every kind of airplane old and new. We eat about 11:30 to 12:00 and have burgers hot dogs and in the winter chili and Cajun food. Kids are welcome and rides are available for anyone that shows up. Questions? Call Shannon Sharp: 405-238-4035 or email: casandjohnsmith@gmail.com

Saturday, February 3, 2024—Morriton, AR - Morriton Municipal Airport (KBDQ) 9:00 AM until all food is gone. Fly in or Drive in. Full Breakfast with Petit Jean Sausage & Bacon. Sponsored by EAA 1590. EAA Meeting will follow breakfast. Breakfast will be served in the big blue hangar, Unicom 122.8. This will be a recurring event on the first Saturday of the month. Contact: 501-472-1197

Saturday, February 3, 2024—Springdale, AR (KASG). Free Ground school first Saturday of every month upstairs in the terminal conference room. NWA Flying Club teaches a Free Ground School the First Saturday every month from nine until noon and you can fly 40 hours in an airplane and 20 hours with an instructor for \$5000. Gary O'Neal (479)283-6261

Saturday, February 3, 2024—Bryant, AR - Saline County Airport (KSUZ) 11:00 am - 2:00 pm Fly or Drive In Lunch - \$10 per person donation recommended. All proceeds will support the Central Arkansas Flying Club. No registration for lunch is required! Come by either by air or road to show off your plane or classic car, and / or for hamburgers / hot dogs, socialize with other pilots from the area, and to see the airplanes and cars. Contact: Anthony Owen at FlyCentralAR@gmail.com (I have a flyer available upon request). For pilots there will be a free WINGS training opportunity!

([https://www.faasafety.gov/SPANS/event\\_details.aspx?eid=126136&caller=/SPANS/events/EventList.aspx](https://www.faasafety.gov/SPANS/event_details.aspx?eid=126136&caller=/SPANS/events/EventList.aspx))

### Sunday, February 4, 2024

ALVA, OKLAHOMA - DONUTS AND COFFEE - Every Sunday 8am – 10am

Alva Regional Airport (AVK) CTAF: 122.8

No Cost. Donations appreciated.

Derrick Courson -Manager

(580) 327-2898 – Airport

(580) 748-2709 – Cell

2875 College Blvd.

Alva, OK. 73717

Website <http://alvaok.org/ara.htm>

<https://www.facebook.com/alvaregionalairport>

### Saturday, February 10, 2024

Haskell OK: Coffee & Donuts

Haskell Airport (2K9) AirNav.com CTAF: 122.9  
EVERY SATURDAY - 8:00 am - 10:00 am - Rain or  
shine, fly or drive, aviation enthusiasts will be there no  
matter what the weather is doing.  
See flyer.

**Saturday, February 10, 2024**

EAA 377 Potluck Lunch – Noon  
Lyddon Aero Center – Liberal KS (KLBL)  
Anyone interested in airplanes and flying welcome!

**Sunday, February 11, 2024**

ALVA, OKLAHOMA - DONUTS AND COFFEE - Ev-  
ery Sunday 8am – 10am  
Alva Regional Airport (AVK) CTAF: 122.8  
No Cost. Donations appreciated.  
Derrick Courson -Manager  
(580) 327-2898 – Airport  
(580) 748-2709 – Cell  
2875 College Blvd.  
Alva, OK. 73717  
Website <http://alvaok.org/ara.htm>  
<https://www.facebook.com/alvaregionalairport>

**Saturday February 17** - Berryville, AR - Carroll Coun-  
ty Airport (4M1) 3rd Saturday BREAKFAST EVENT!!  
8:00 - 10:00 AM. Farm fresh scrambled eggs, sausage  
patties & links, flapjacks, sweet tea and always a bunch-  
o-sweet treats made by the airport wives...\$10.00 sug-  
gested donation. Contact: 870-423-8393.

**Saturday February 17** - Pine Bluff, AR - Grider Field  
Airport (KPBF) fly-in breakfast 3rd Saturday of every  
month. Our specialty is eggs anyway you want them,  
from fried to eggs Benedict. You should try our om-  
elets. Come enjoy your breakfast in our WWII style  
Officers Club. A \$8.00 donation gets you all you can  
eat. Contact: Sara Works (870-543-9933) email:  
[works\\_sara@yahoo.com](mailto:works_sara@yahoo.com)

**Saturday, February 17, 2024**

Haskell OK: Coffee & Donuts  
Haskell Airport (2K9) AirNav.com CTAF: 122.9  
EVERY SATURDAY - 8:00 am - 10:00 am - Rain or  
shine, fly or drive, aviation enthusiasts will be there no  
matter what the weather is doing.  
See flyer.

**Sunday, February 18, 2024**

ALVA, OKLAHOMA - DONUTS AND COFFEE - Ev-  
ery Sunday 8am – 10am  
Alva Regional Airport (AVK) CTAF: 122.8  
No Cost. Donations appreciated.  
Derrick Courson -Manager  
(580) 327-2898 – Airport  
(580) 748-2709 – Cell

2875 College Blvd.  
Alva, OK. 73717  
Website <http://alvaok.org/ara.htm>  
<https://www.facebook.com/alvaregionalairport>

**Saturday February 24** - North Little Rock, AR - North  
Little Rock Municipal Airport  
(KORK) EAA Chapter 165 4th Saturday Breakfast. We  
start serving at 8:00 and go until 10:00. If it is cold or  
hot, the hangar is well heated and air conditioned. DI-  
RECTIONS : The main entrance to NLR Airport is on  
Remount Road. We have OUR OWN ENTRANCE,  
Gate #20, which is located about a city block south  
of the main airport entrance still on Remount Road.  
Planes park in front of the hangar and cars in the park-  
ing lot behind the hangar. We are located right at the  
beginning of runway 5. Please come on out. Arrive  
hungry, leave stuffed. Any questions - 419 360-7414

**Saturday, February 24, 2024**

Haskell OK: Coffee & Donuts  
Haskell Airport (2K9) AirNav.com CTAF: 122.9  
EVERY SATURDAY - 8:00 am - 10:00 am - Rain or  
shine, fly or drive, aviation enthusiasts will be there no  
matter what the weather is doing.  
See flyer.

**Sunday, February 25, 2024**

ALVA, OKLAHOMA - DONUTS AND COFFEE - Ev-  
ery Sunday 8am – 10am  
Alva Regional Airport (AVK) CTAF: 122.8  
No Cost. Donations appreciated.  
Derrick Courson -Manager  
(580) 327-2898 – Airport  
(580) 748-2709 – Cell  
2875 College Blvd.  
Alva, OK. 73717  
Website <http://alvaok.org/ara.htm>  
<https://www.facebook.com/alvaregionalairport>

**Saturday, March 2, 2024**

Ponca City Aviation Booster Club Fly-In/Drive-In  
Breakfast – 7:00-10:30AM  
Ponca City OK Regional Airport (KPNC)  
Sponsored by the Ponca City Aviation Foundation  
on the first Saturday of every month rain or shine.  
Contact Bruce Eberle 580-761-5884 email: [ou444@  
yahoo.com](mailto:ou444@yahoo.com) Breakfast is served from 7:00 to 10:30  
a.m. The requested donation is \$10 adults, \$5  
children under 12. The menu includes pancakes,  
scrambled eggs, bacon, sausage, potatoes, biscuits  
& gravy, orange juice, coffee, and fruit. Cold soda  
pop and bottled water are available at \$1.00 each.  
See also FaceBook Group – Ponca City Avia-  
tion Booster Club - [https://www.facebook.com/  
groups/1125751554951764](https://www.facebook.com/groups/1125751554951764) See Attached Flyer.

### **Saturday, March 2, 2024**

Haskell OK: Coffee & Donuts  
Haskell Airport (2K9) AirNav.com CTAF: 122.9  
EVERY SATURDAY - 8:00 am - 10:00 am - Rain or  
shine, fly or drive, aviation enthusiasts will be there no  
matter what the weather is doing.  
See flyer.

### **Saturday, March 2, 2024**

Pauls Valley Hamburger Lunch Fly-In  
Pauls Valley Municipal Airport (KPVJ)  
AirNav.com CTAF: 122.8  
Oklahoma Antique Airplane Association  
LETS KEEP EM FLYING!! - Johnene Smith  
The Oklahoma Antique Airplane Association has a  
monthly meeting/Fly-In at or club house on the north-  
west corner of the PVJ field, once a month on the first  
Saturday. Come join in on the fun! You don't have to  
fly an antique in, we have cars, motorcycles, and ev-  
ery kind of airplane old and new. We eat about 11:30  
to 12:00 and have burgers hot dogs and in the winter  
chili and Cajun food. Kids are welcome and rides are  
available for anyone that shows up. Questions? Call  
Shannon Sharp: 405-238-4035 or email: casandjohn-  
smith@gmail.com

### **Sunday, March 3, 2024**

ALVA, OKLAHOMA - DONUTS AND COFFEE - Ev-  
ery Sunday 8am – 10am  
Alva Regional Airport (AVK) CTAF: 122.8  
No Cost. Donations appreciated.  
Derrick Courson -Manager  
(580) 327-2898 – Airport  
(580) 748-2709 – Cell  
2875 College Blvd.  
Alva, OK. 73717  
Website <http://alvaok.org/ara.htm>  
<https://www.facebook.com/alvaregionalairport>

### **Sunday, March 10, 2024**

ALVA, OKLAHOMA - DONUTS AND COFFEE - Ev-  
ery Sunday 8am – 10am  
Alva Regional Airport (AVK) CTAF: 122.8  
No Cost. Donations appreciated.  
Derrick Courson -Manager  
(580) 327-2898 – Airport  
(580) 748-2709 – Cell  
2875 College Blvd.  
Alva, OK. 73717  
Website <http://alvaok.org/ara.htm>  
<https://www.facebook.com/alvaregionalairport>

### **Saturday, March 16, 2024**

ROUTE 66 RUNWAY RUN – Route66RunwayRun.  
com  
TASM / Tulsa International Airport (KTUL)

### **Sunday, March 17, 2024**

ALVA, OKLAHOMA - DONUTS AND COFFEE - Ev-  
ery Sunday 8am – 10am  
Alva Regional Airport (AVK) CTAF: 122.8  
No Cost. Donations appreciated.  
Derrick Courson -Manager  
(580) 327-2898 – Airport  
(580) 748-2709 – Cell  
2875 College Blvd.  
Alva, OK. 73717  
Website <http://alvaok.org/ara.htm>  
<https://www.facebook.com/alvaregionalairport>

**Monday, April 8, 2024** - Solar Eclipse activities at  
various airports along the Eclipse path. Additional in-  
formation forth coming.

### **Saturday-Sunday, October 12-13, 2024**

Cushing Fly In Fair - Cushing OK (KCUH)



# EAA Chapter 88's **PANCAKE BREAKFAST**

8am-10am/2nd Saturday of each month

3612 N. Webb Rd., Wichita, KS 67226

[www.EAA88.org](http://www.EAA88.org) - [www.facebook.com/88EAA](https://www.facebook.com/88EAA)

Phyllis Blanton (316) 390-3241 / Christine Toevs (316) 435-2091

## PRICES

**\$7** for adults (13+)

**\$5** for children

## MENU

Biscuits & Gravy, Scrambled Eggs, Pancakes,  
Sausage Patties, Coffee, Fruit Juice

## ACTIVITIES

**FREE** Young Eagles Flights  
(9:00am-Noon, Weather Permitting. Ages 8-17.)

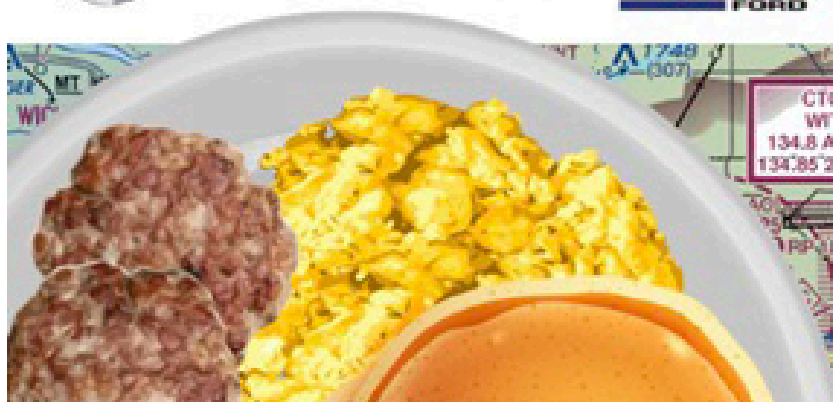
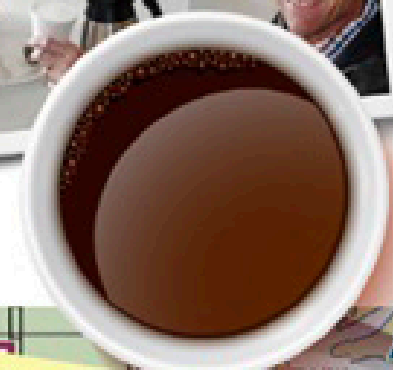
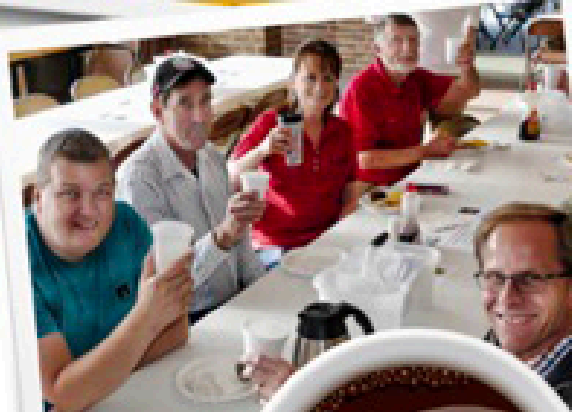
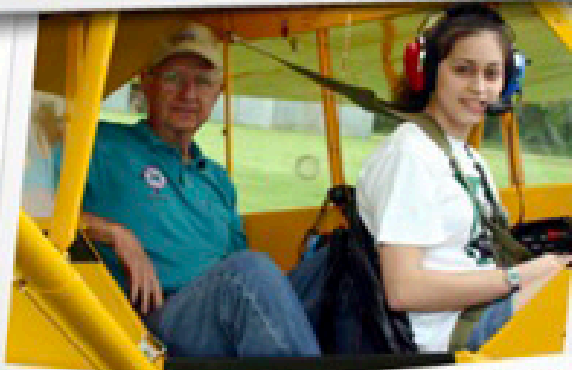


**FREE** Young Builders Projects  
Foam Plate Glider, Paper Helicopter, Coloring

Thank You to our Sponsors!



MIDWEST CORPORATE AVIATION



CTG WICHITA  
WITHIN 20  
134.8 ATIS/OPEN  
134.85 250.375

Col. James Jabara Airport (KAAO) Info:  
1000' AGL Pattern Altitude (KBEC)  
Class D is 1 mi. South of the runway  
ASOS: 134.025 / CTAF: 122.7  
Wichita Approach/Departure: 134.2  
Runway 18-36 100' x 6,101'  
Field Elevation 1421'

# Ponca City

## Fly-In/Drive-In Breakfast



**Where: Ponca City Oklahoma Regional Airport (KPNC)**

**When: 1<sup>st</sup> Saturday of Month (7 to 10:30 AM) Rain / Shine**

**Open to the Public: Bring the family; children must be supervised.**

**Free Wi-Fi: fly-in-2g or fly-in-5g password: poncacity**

**Sponsored By: Ponca City Aviation Foundation; a 501(c)(3)**

*Proceeds are used for education and the promotion of aviation to young people of all ages.*

Volunteer help provided by: Ponca City Aviation Booster Club, EAA Chapter 1046, Ponca City High School and others.

See us on Facebook: Ponca City, OK Monthly Fly-in/drive-in Breakfast

**Suggested Donation: Adults \$10, Children \$5**

**Menu: Pancakes, Scrambled Eggs, Sausage,  
Bacon, Potatoes, Biscuits & Gravy,  
Fruit, Orange Juice, and Coffee.  
Soda Pop or Bottled Water – \$1.00 extra**

**Contacts:**

**Bruce Eberle 580-761-5884 [ou444@yahoo.com](mailto:ou444@yahoo.com)**

**Bert Blanton 580-762-3794 [blantonb610@gmail.com](mailto:blantonb610@gmail.com)**

**Don Nuzum 580-767-0470 [nuzumdl@poncacityok.gov](mailto:nuzumdl@poncacityok.gov)**



**LUNCH AVAILABLE: Enrique's Mexican Restaurant (Sat 11-9) 580-762-5507 – Located in Airport Terminal**

**PONCA CITY REGIONAL AIRPORT (KPNC): ELEV 1008, RWY 17-35 7201'x150' – RIGHT TRAFFIC FOR RWY 17**

**FREQUENCIES: CTAF/UNICOM 123.0 // ASOS 134.075 (580-765-0049) // ILS/DME–RWY17 111.9 // LOM/NDB 515**

**FUEL: PHILLIPS 100LL 24-HR – Self Service // Truck JET-A & 100LL – CALL CTAF 123.0 or PHONE 580-767-0429**



